

FV-II Release Information

Table of Contents

Current	2
FlukeView-II for ScopeMeter®, v3.1.0.....	2
Upgate from previous version, migrate database.....	2
Utilization Analysis and Data Privacy	4
Changes in FlukeView-II v3.1.0.....	5
Known Issues.....	5
Revision History.....	5
FlukeView-II for ScopeMeter®, v3.0.0.....	5
FlukeView-II for ScopeMeter®, v2.02.....	6

Current

FlukeView-II for ScopeMeter®, v3.1.0

This release requires new instrument firmware rev 1.3 for 190 Series-III and MDA550 Series-III instruments.

Upgrade from previous version, migrate database

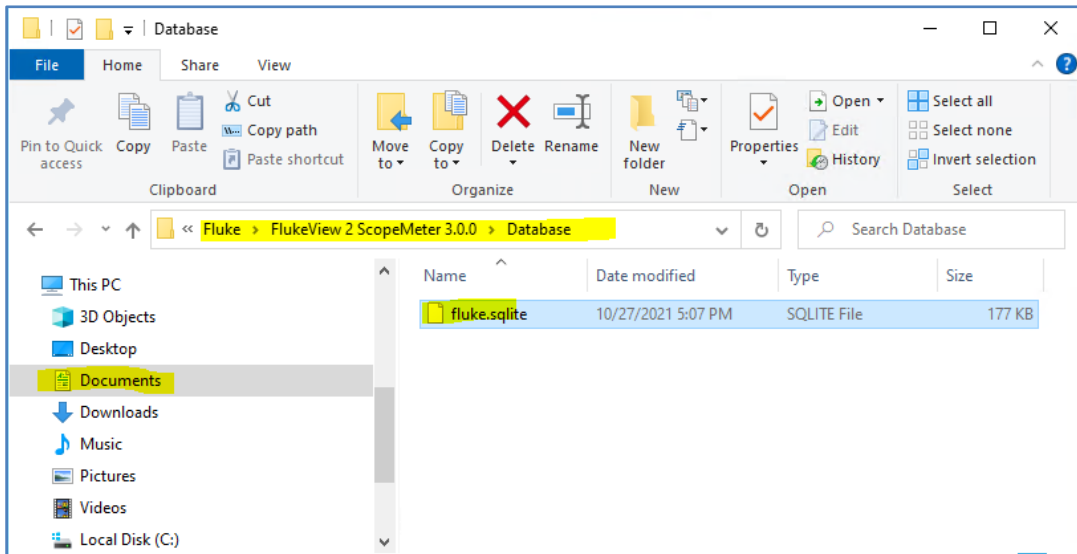
If you install FlukeView-II for ScopeMeter for the first time, simply follow the instructions on screen.

If you are **updating** from a previous version, please note below information.

1. Backup your FlukeView database file. Please note that FlukeView does not depend on any database installation, but has all utilized functionality integrated.

E.g., if you are updating from v3.0.0, find the database file “fluke.sqlite” in

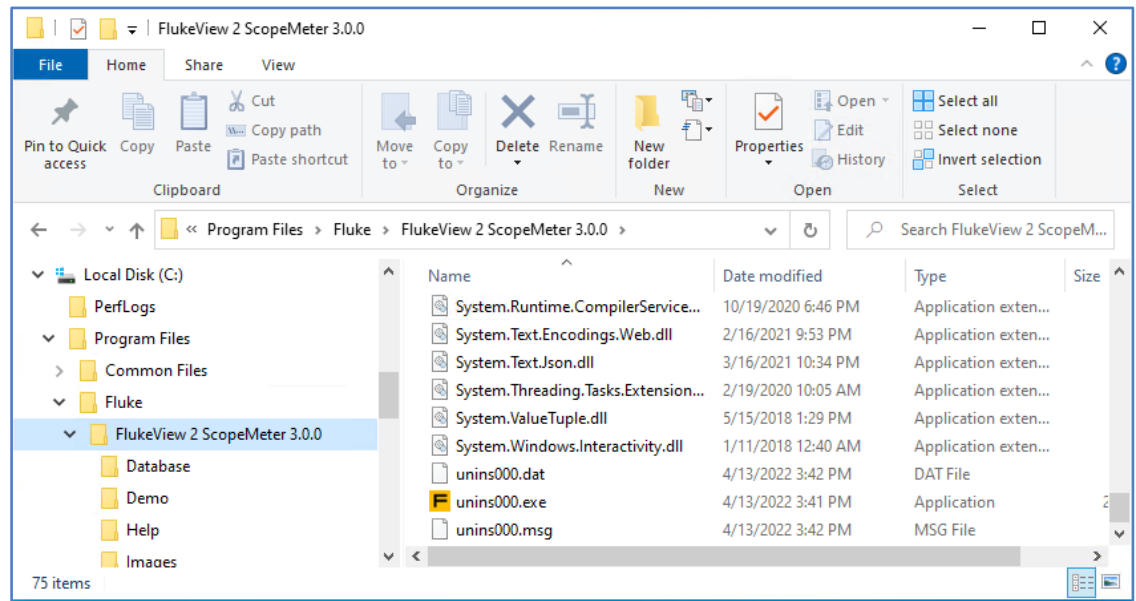
C:\Users*<yourAccount>*\Fluke\FlukeView 2 ScopeMeter 3.0.0\Database



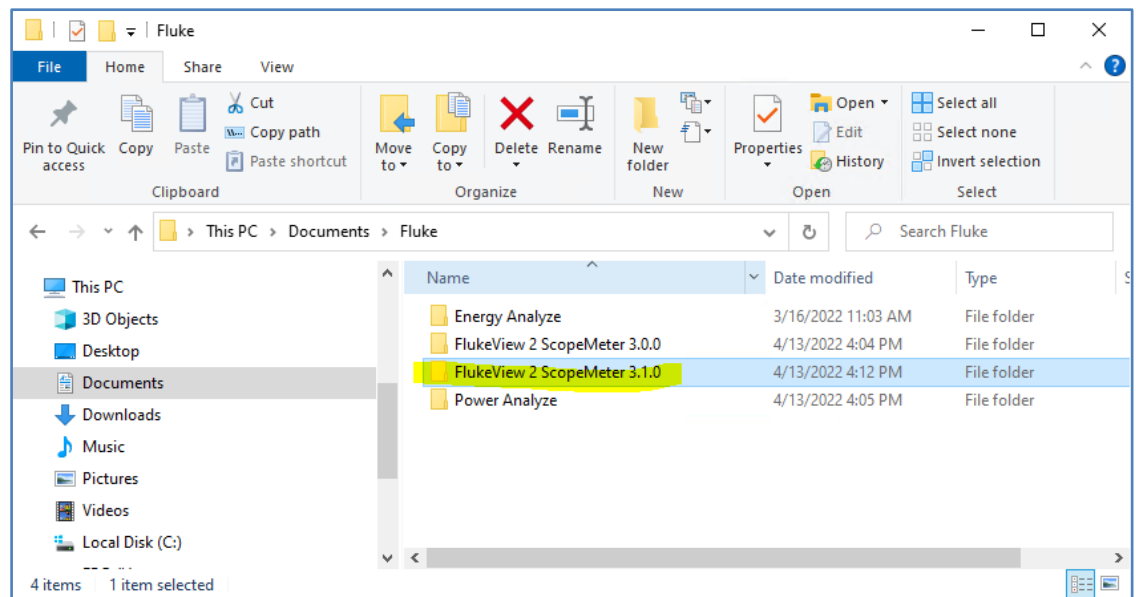
and copy this file to e.g. the desktop.

2. We recommend uninstalling any previous versions of FlukeView-II before installing the update. You will need elevated rights (“admin”) to do so.
 - a. To do so, please make sure that FlukeView-II isn’t currently running.
 - b. Navigate to the installation directory
C:\Program Files\Fluke\FlukeView 2 ScopeMeter 3.0.0\
and execute “unins000.exe”.

On 32bit systems, the install directory is C:\Program Files (x86)\Fluke\...



3. Execute the FlukeView-II v3.1.0 installer.
4. At first run, FlukeView-II will search the database file in your documents folder and allocate a new database file in case nothing is found. No data is overwritten. This occurs for each user on a PC. To use your existing database with the new installation (migrate), please execute the steps below.
 - a. Start FlukeView-II v3.1.0
 - b. Navigate to your documents folder and find the new entry "FlukeView 2 ScopeMeter 3.1.0".



- c. Close FlukeView-II v3.1.0
- d. Replace the database file found in the new folder, i.e.
`C:\Users\<yourAccount>\Fluke\FlukeView 2 ScopeMeter 3.1.0\Database`
with the backup copy created in step 1 above.

Utilization Analysis and Data Privacy

With FlukeView-II release 3.1.0 we introduce utilization analysis.

We record series of “events” that occur while working with FlukeView as you click the different buttons. These events are buffered on your PC and synchronized to our service partner, Mixpanel, for storage in a location within the EU.

Information contained in all events:

- Pseudonymous user ID (one per Windows account that the software is utilized with).
- Date and time of the event, and of the synchronization.
- Region (city, country).
- Windows culture settings.

We collect these specific events with additional data:

- Application start
 - + CPU details.
 - + RAM, available and utilized.
 - + Screen resolution.
- Application close
 - + Uptime.
- Connect to instrument
 - + Connection type (USB, WiFi)
 - + Instrument type, serial number, firmware version.
- Open from file
 - + File extension, size, number of entities.
- Save to file
 - + File extension, number of entities).
- Print
 - + Paper size, data type, number of pages.
- Analyze | Waveform
 - + data type
 - + number of entities
- Analyze | Waveform | FFT
 - + number of samples.
- Log Readings
 - + duration
- Remote Control
 - <no additional data>.

Users who acknowledged utilization analysis can opt out at any time by clicking the corresponding button on the Help | About panel.

Please find additional information at [Fluke's Privacy Policy](#).

Changes in FlukeView-II v3.1.0

- **NEW:** Added FFT analysis feature.
- **NEW:** added item selector for downloading saved data from instruments.
- **NEW:** added feature to share FlukeView debug files for enhanced troubleshooting.
- **Improved:** WiFi device communication with 190 Series-III and MDA550 series-III instruments. Generally improved stability of device communication, including USB.
- **Improved:** performance increase when working with large datasets for open, save, and UI operations.
- **Improved:** printing quality.
- **FIXED:** erroneous functionality with copy to clipboard, open from file, and filter operations on home screen, progress bar shown during download, and device detection were fixed.

Known Issues

- Data transfers for below items from series-III instruments (Fluke 190 series-III, MDA series-3) require a USB connection ...
 - to download reports from series 3 MDA instruments.
 - to download "Replay" data.
 - to download stored measurements.
 - to save setup and reference data to series 3 instruments.
 - to log readings.
- Corrections to UI texts are planned for next update.
- FlukeView-2 does not work with Windows roaming profiles.

Revision History

FlukeView-II for ScopeMeter®, v3.0.0

- **NEW:** added support for Fluke 190 Series-III and MDA550 series-III instruments for USB and WiFi communication.
- **NEW:** working with cursor – positioning cursors to min/max, to start/end of data series, swap cursors. Added option to "lock" axis scaling, as well as manual entry of scaling value.
- **NEW:** extended navigation within measurement history.
- **FIXED:** Product Activation could fail on valid activation codes.
- **Improved:** standardized y-axis grid labels to show engineering units.
- **Improved:** added new UI elements for quick chart pan/scale operations.
- **Improved:** added standard image formats for saving screens as bmp, png, etc.
- **Improved:** added import and improved export of (localized) .csv files. There are still known issues with importing .csv files from USB thumb drives.
- **Improved:** opening measurement files from FlukeView-I (SW90W).
- **Improved:** import of data from 12xB series instruments (RPM unit, y-axis labels).

Known issues:

- Not all Fluke 190-III and MDA550 Series III features are available when connected via WiFi. FlukeView-II indicates to utilize USB cable connection instead.
- .csv files that were created directly by instruments cannot be imported.

FlukeView-II for ScopeMeter®, v2.02

Relative to the previous version the following changes have been implemented:

- Added support for 190 Series II and MDA-510 and MDA-550 Motor Drive Analyzers
- Added function to zoom using markers on horizontal scrollbar
- Added remote control for Motor Drive Analyzers and 190 Series II
- Added option to download all saved memory locations from 190 Series II and MDA
- Added Time of day to cursor values
- Added printing of multiple screens on one page, if possible, when printing report. The number of screens per page can be setup in Configuration menu.
- Added demo files in ..\Fluke.FV2 directory
- Improved reconnection when connection dropped
- Fixed issue so that date/time of screens (.PNG) is used in reports instead of transfer time
- Fixed issue with opening some .FVS files
- Fixed scaling issue with some waveforms in Analyze...Waveform