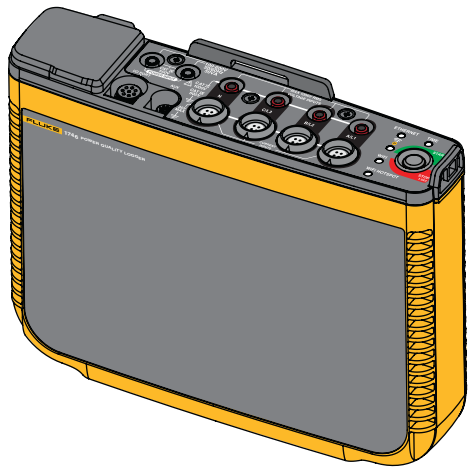
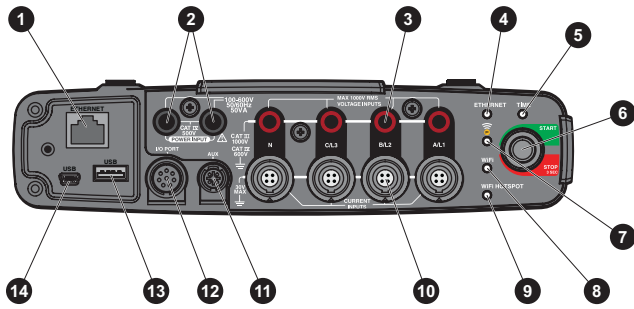


1742/1746/1748

3 Phase Power Quality Logger

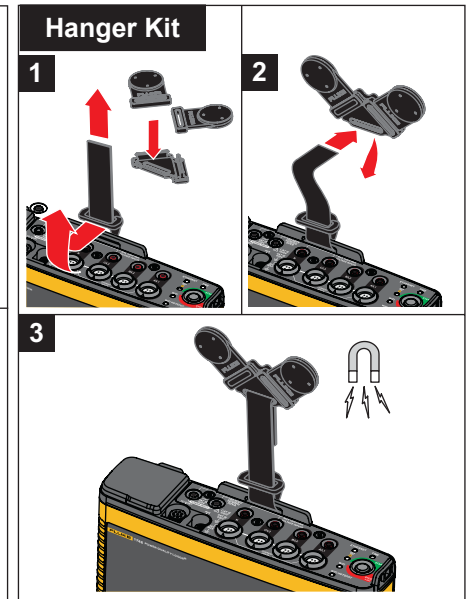
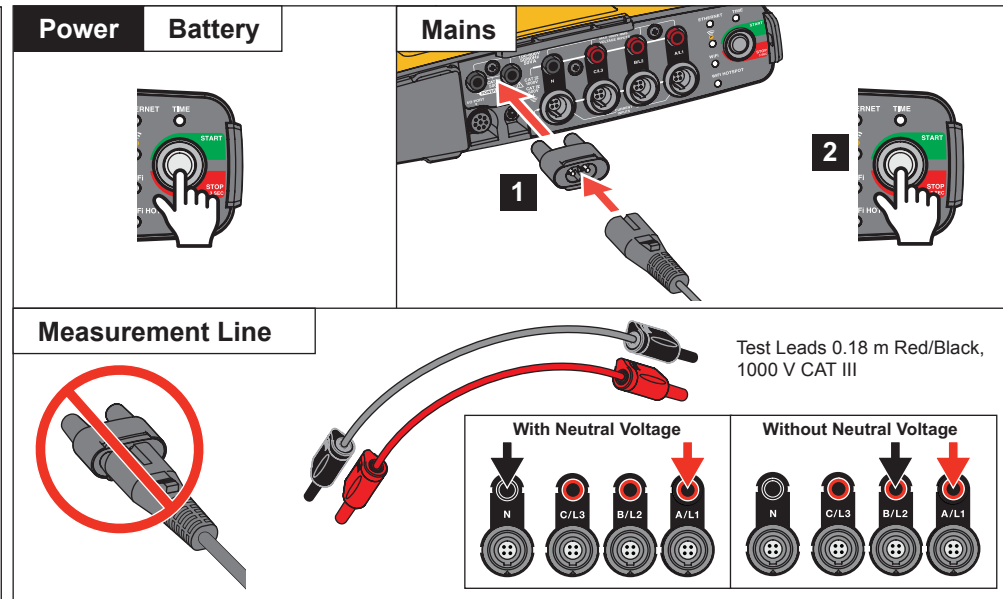
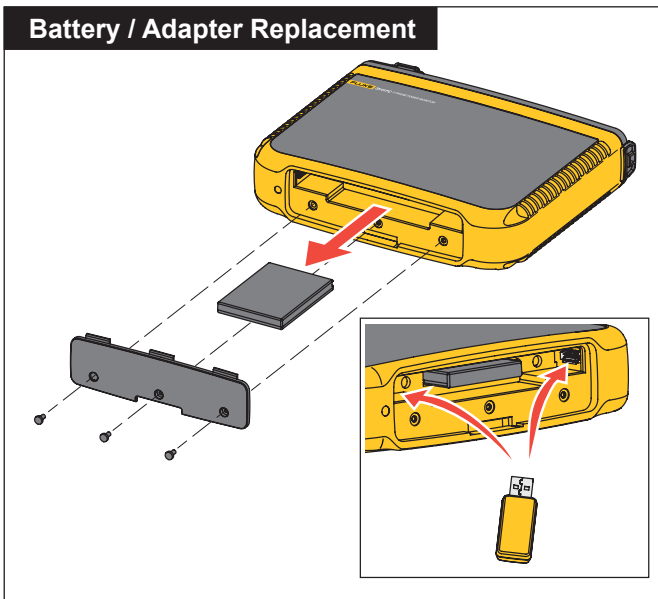
See Safety Information.
 Go to www.fluke.com to register your product, download manuals, and find more information.
 Vaya a www.fluke.com para registrar el producto, descargar manuales y obtener más información.
 Acesse www.fluke.com.br para registrar seu produto, baixar manuais e para obter mais informações.

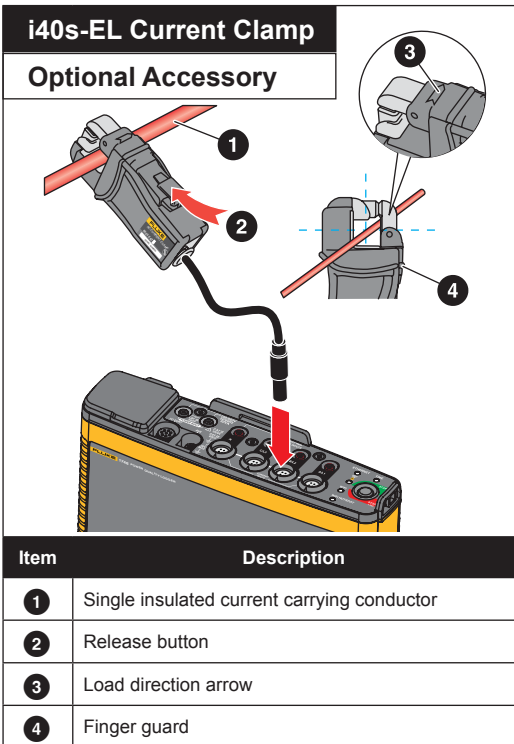
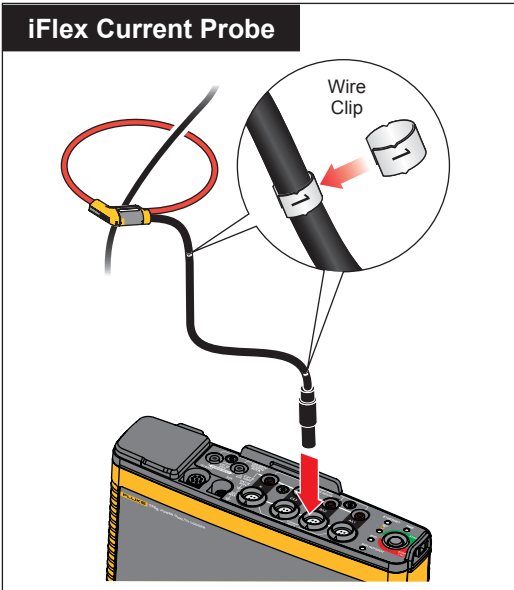


Configuration and operation of this Product requires Energy Analyze Plus software. Go to www.fluke.com for more information.

| Overview | |
|----------|---|
| Item | Description |
| 1 | Ethernet |
| 2 | Power Supply Input 100-500 V 50/60 Hz 50 VA |
| 3 | Voltage measurement inputs (3 phases + N) |
| 4 | LED for Ethernet |
| 5 | LED for Time |
| 6 | Power On/Off |
| 7 | LED for Fluke Connect® |
| 8 | LED for WiFi |
| 9 | LED for WiFi Hotspot |
| 10 | Current measurement inputs (3 phases + N) |
| 11 | Aux connector |
| 12 | I/O connector for GPS Receiver |
| 13 | USB connector (data download and firmware upgrade) |
| 14 | Mini-USB connector (data download and firmware upgrade) |

| LED Indicators | | | |
|----------------|--------------------------------|---|--|
| LED | Color | Status | Note |
| Start/Stop | green | No user information or warning available. | |
| | | Logger power from mains. | |
| | No connection errors detected. | | |
| Start/Stop | amber | Information or warning available Possible reasons: Logger power from battery or circuit connection error detected. | Check the actual status with Energy Analyzer Plus if ⚠ shows |
| | white | Steady: start/stop Flashing: file operation in progress | Do not turn off the Logger or remove the USB flash drive |
| Time | green | Time synchronization status is OK | |
| | off | External time synchronization is not in use | |
| | red | Time synchronization source not available | Check the time synchronization source and configuration of the Logger |
| Ethernet | green | Ethernet link detected and IP address is assigned | The LED flashes during the IP address assignment |
| | blue | Connection to the Fluke Connect Cloud is established | |
| Fluke Connect | blue | Flashing: Receiving data from all configured FC modules | Rapid flashing indicates loss of connection to one or all FC modules |
| WiFi | green | Steady: Connection to a WiFi access point established | |
| | | Flashing: Configured WiFi access point is out of range or the connection can not be established | Check the WiFi access point configuration of the Logger. Reduce the distance between the Logger and the WiFi access point. Verify that the passphrase is correct. |
| | blue | Connection to the Fluke Connect cloud established | |
| WiFi Hotspot | green | The Logger WiFi hotspot is active | |
| | blue | A client is connected to the WiFi hotspot | |





Setup with Energy Analyzer Plus

1 Start Energy Analyze Plus

WiFi

On the Windows PC:

- Select the Logger from the WiFi access points in range.
- Enter the password: **fluketools**

USB

If Power button LED is amber see LED indicators table.

2

Go to **Instrument Setup** > **Select Logger**, and login.

Factory Default
Users name: admin
Password: <blank> or admin

3

Synchronize the date and time between the Logger and the software.

4

Select the topology.

5

Select the voltage, ranges and scaling, and current.

6

Verify the connections.

| Item | Description |
|------|---|
| 1 | Single insulated current carrying conductor |
| 2 | Release button |
| 3 | Load direction arrow |
| 4 | Finger guard |

7

Set the limits for the power quality checks.

8

Select averaging interval, logging duration, and start/stop for the logging session.